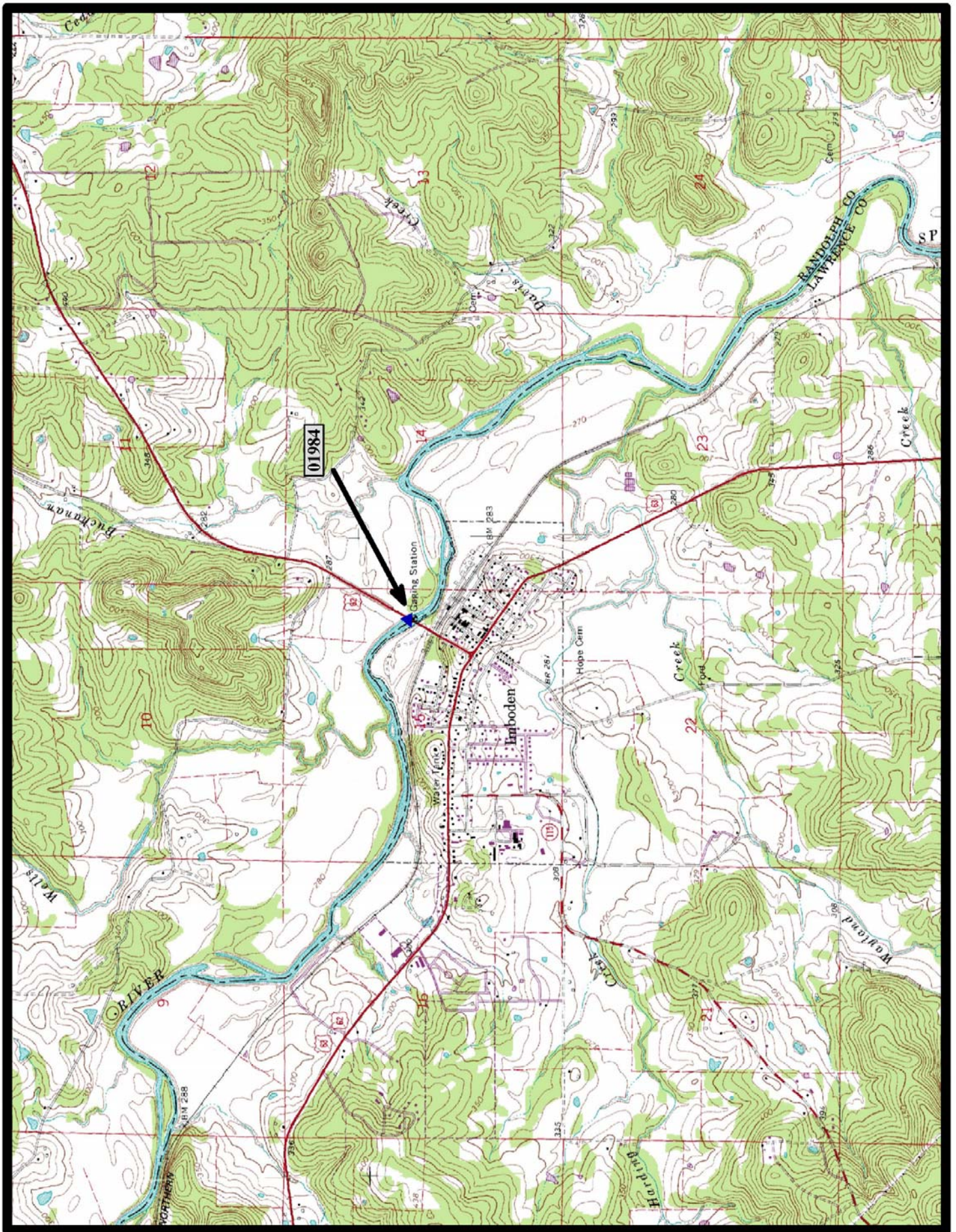




HISTORIC BRIDGE #01984
US HIGHWAY 62
LAWRENCE COUNTY
PARKER PONY TRUSS
CROSSES - SPRING RIVER
DATE OF CONSTRUCTION - 1937
BUILDER - C. F. LYTLE COMPANY, SIOUX CITY, IO
HISTORIC BRIDGE INVENTORY DATE - 1987
SHPO NUMBER - LW0041
HAER NUMBER - AR-26
DATE LISTED ON NATIONAL REGISTER - 4/9/1990
LAT./LONG. 36:12:20.51, -91:10:19.77



←
North

Imboden 7.5 min. Quad



HISTORIC BRIDGE #14804

COUNTY ROAD 64

LOGAN COUNTY

PARKER PONY TRUSS

CROSSES - SHORT MOUNTAIN CREEK

DATE OF CONSTRUCTION - 1928

BUILDER - VIRGINIA BRIDGE & IRON COMPANY OF TENN., ROANOKE, VA

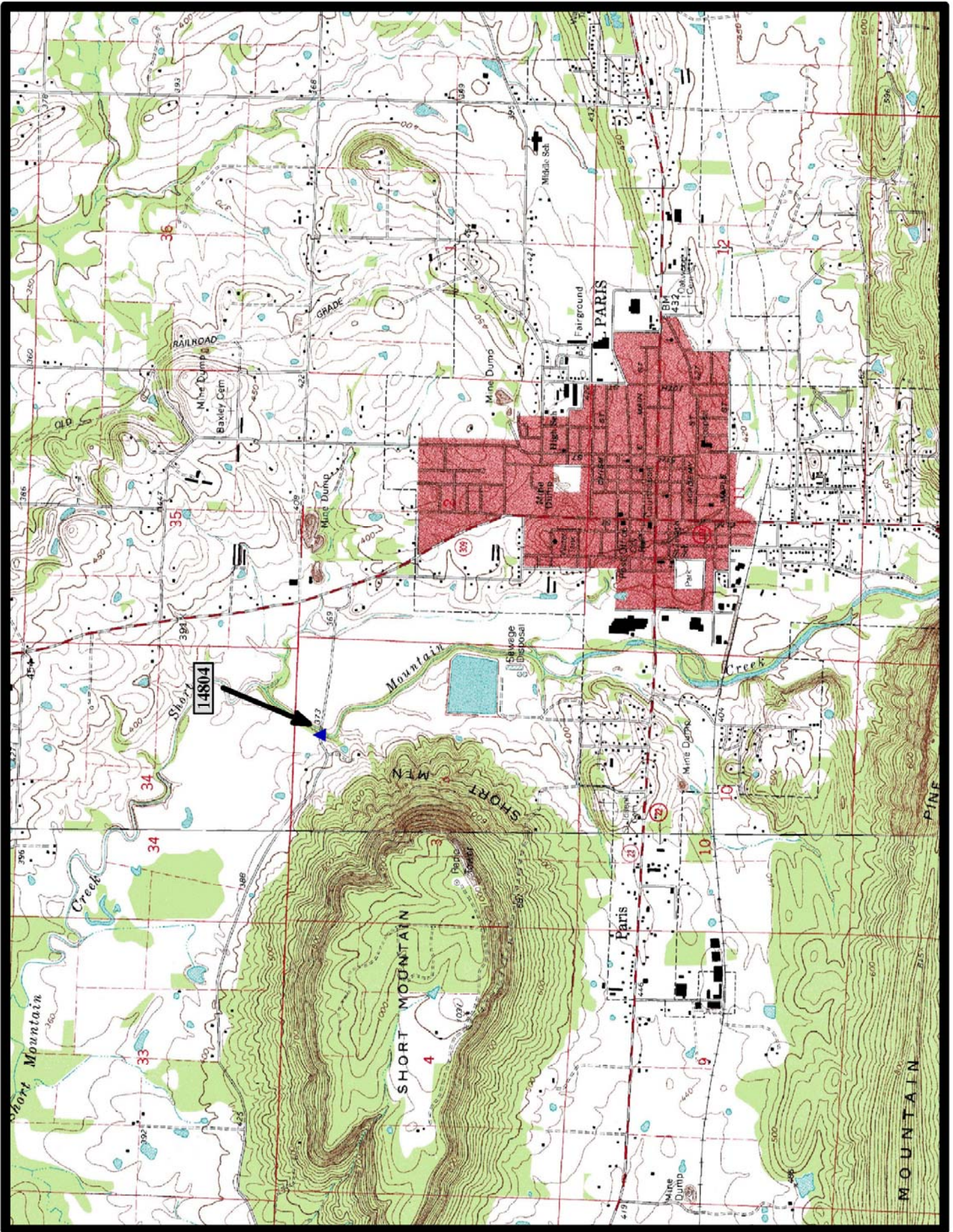
HISTORIC BRIDGE INVENTORY DATE - 2005

SHPO NUMBER - LO0107

HAER NUMBER -

DATE LISTED ON NATIONAL REGISTER - 9/24/2004

LAT./LONG. 35:18:34.83, -93:44:37.62

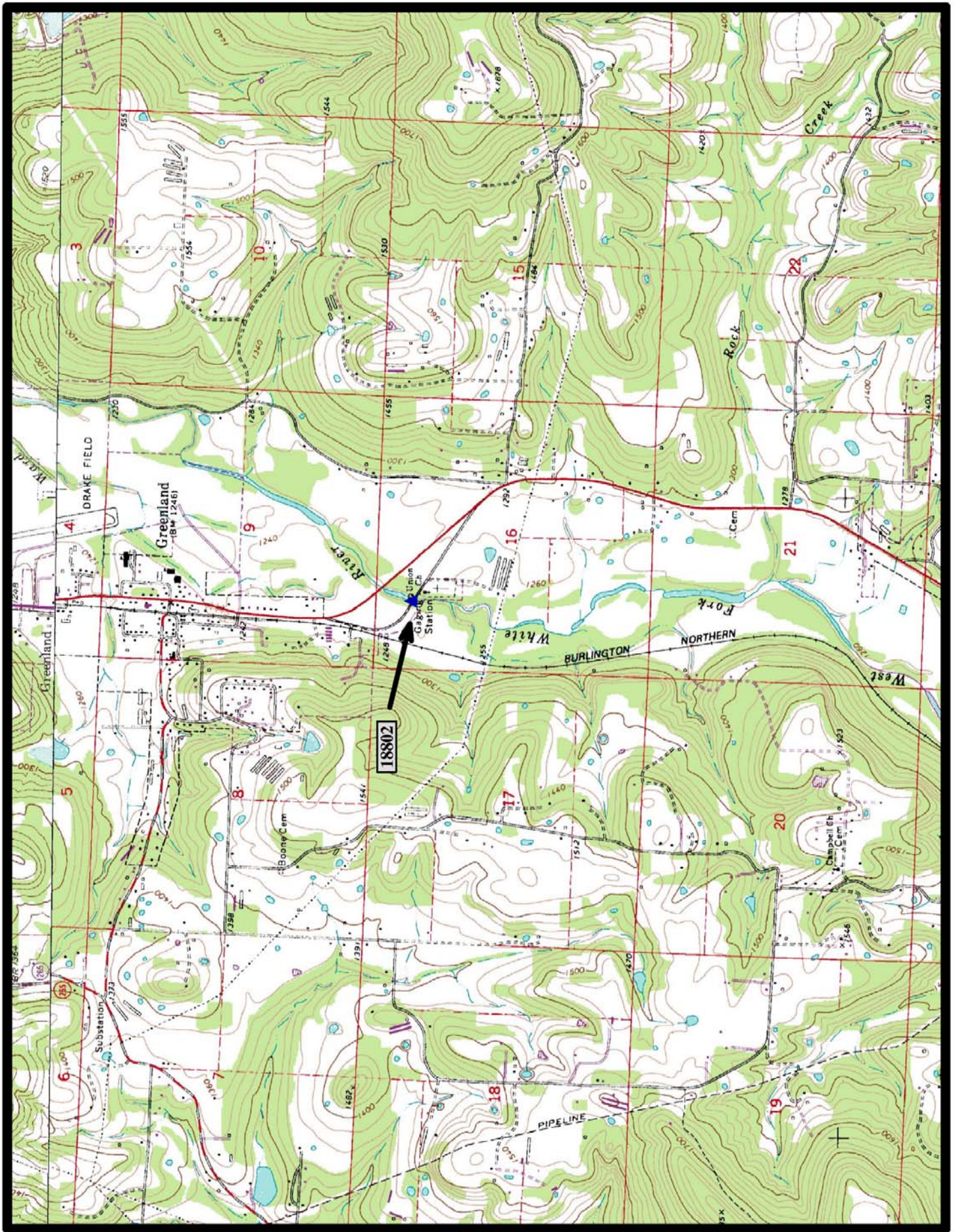


North

Paris 7.5 min. Quad



HISTORIC BRIDGE #18802
COUNTY ROAD 1194
WASHINGTON COUNTY
PARKER PONY TRUSS
CROSSES - WEST FORK WHITE RIVER
DATE OF CONSTRUCTION - 1930
BUILDER - MAXWELL CONSTRUCTION COMPANY, COLUMBUS, KS
HISTORIC BRIDGE INVENTORY DATE - 2005
SHPO NUMBER - WA0917
HAER NUMBER -
DATE LISTED ON NATIONAL REGISTER -
LAT./LONG. 35:58:52.66, -94:10:26.37

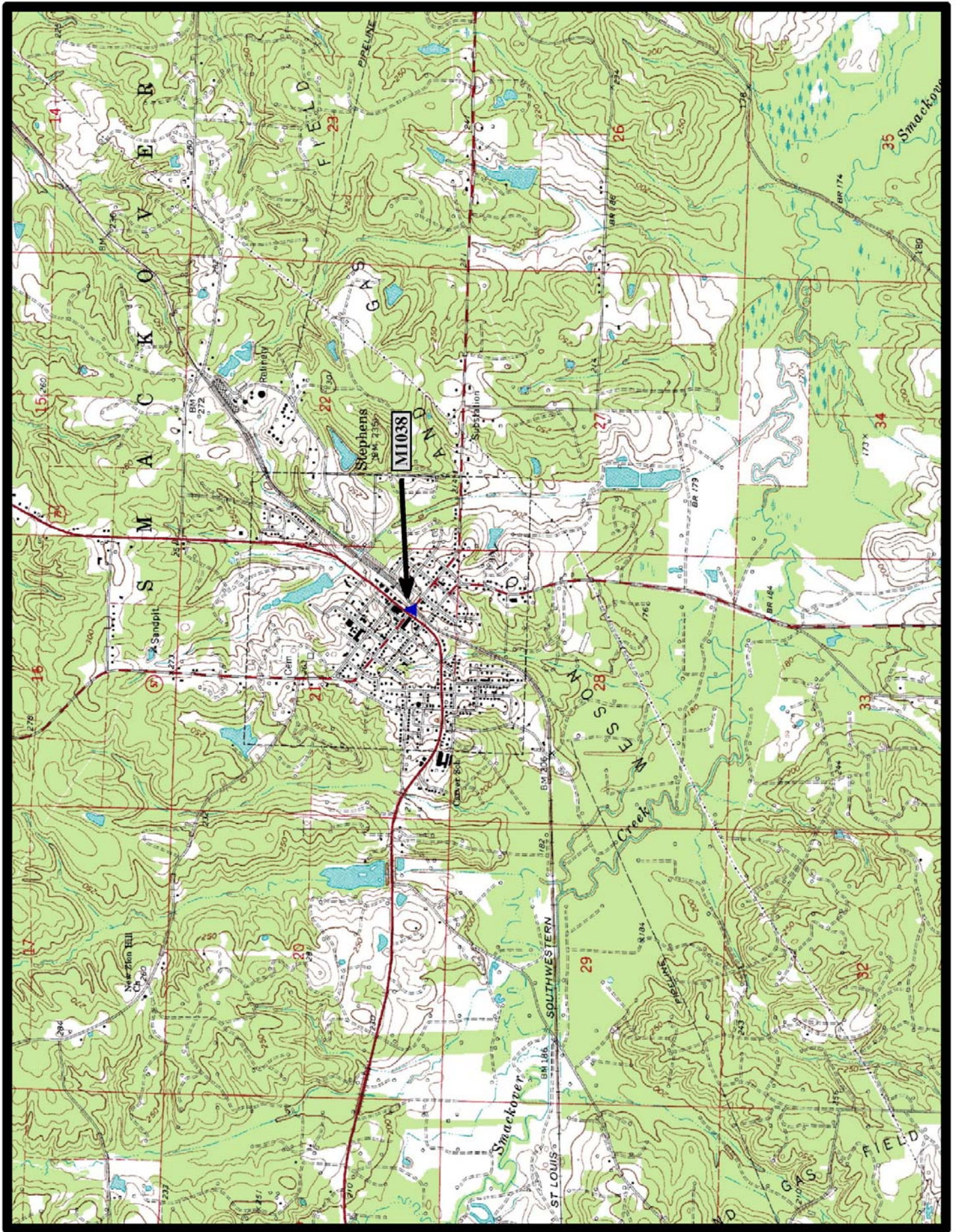


←
North

West Fork 7.5 min. Quad



HISTORIC BRIDGE #M1038
BYPASSED SEGMENT OF STATE HIGHWAY 57
OUACHITA COUNTY
PARKER PONY TRUSS
HISTORIC BRIDGE INVENTORY DATE - 2005
DATE OF CONSTRUCTION - 1923
BUILDER - UNKNOWN
SHPO NUMBER - OU0181
HAER NUMBER -
DATE LISTED ON NATIONAL REGISTER - 9/28/2005
LAT./LONG. 33:24:39.59, -93:04:10.08

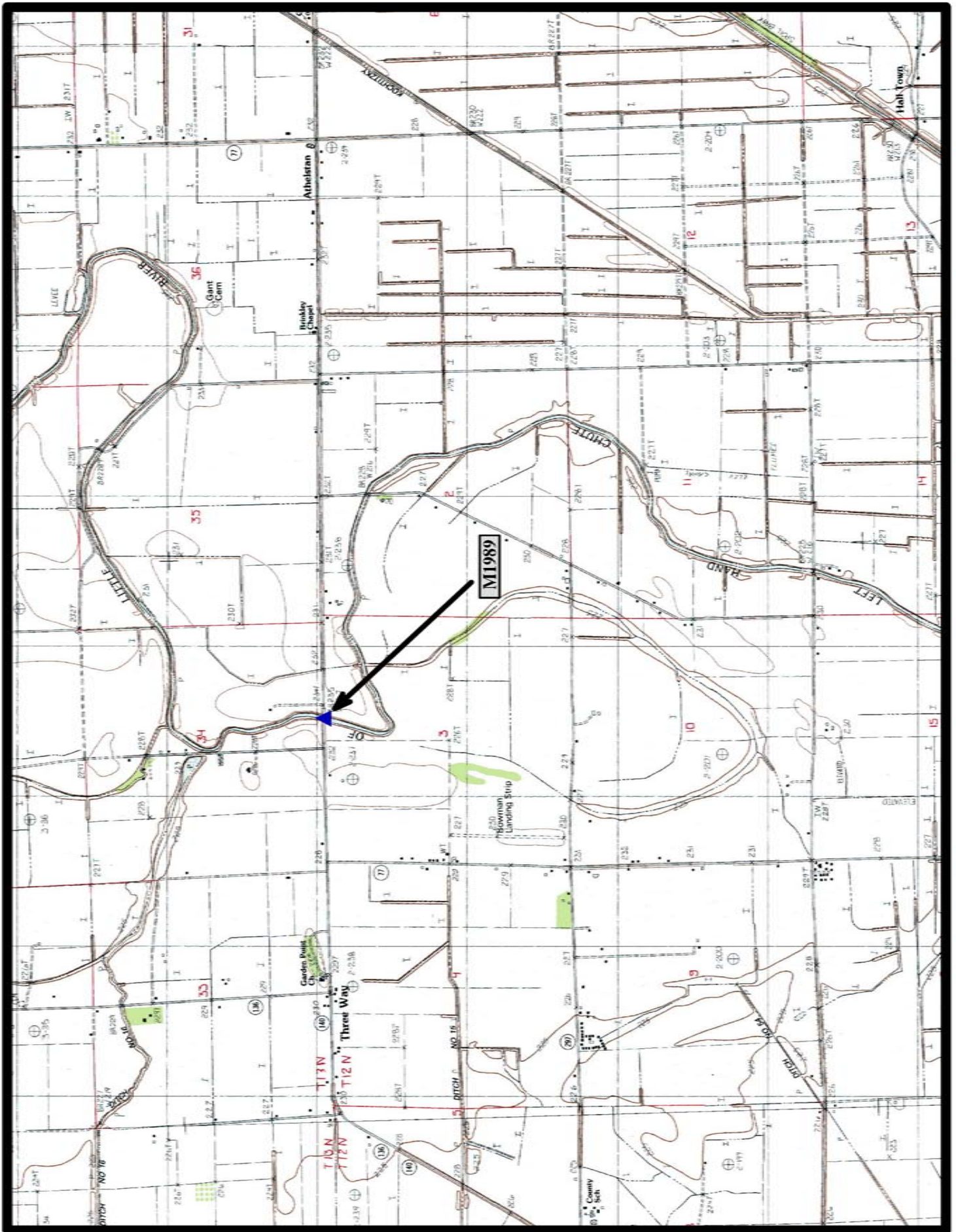


North

Stephens 7.5 min. Quad



HISTORIC BRIDGE #M1989
STATE HIGHWAY 140
MISSISSIPPI COUNTY
PARKER PONY TRUSS
CROSSES - LEFT HAND CHUTE
DATE OF CONSTRUCTION - 1958
BUILDER - D & W BRIDGE COMPANY INC., NORTH LITTLE ROCK, AR
HISTORIC BRIDGE INVENTORY DATE - 2005
SHPO NUMBER - MS0261
HAER NUMBER -
DATE LISTED ON NATIONAL REGISTER -
LAT./LONG. 35:41:57.72, -90:13:12.70

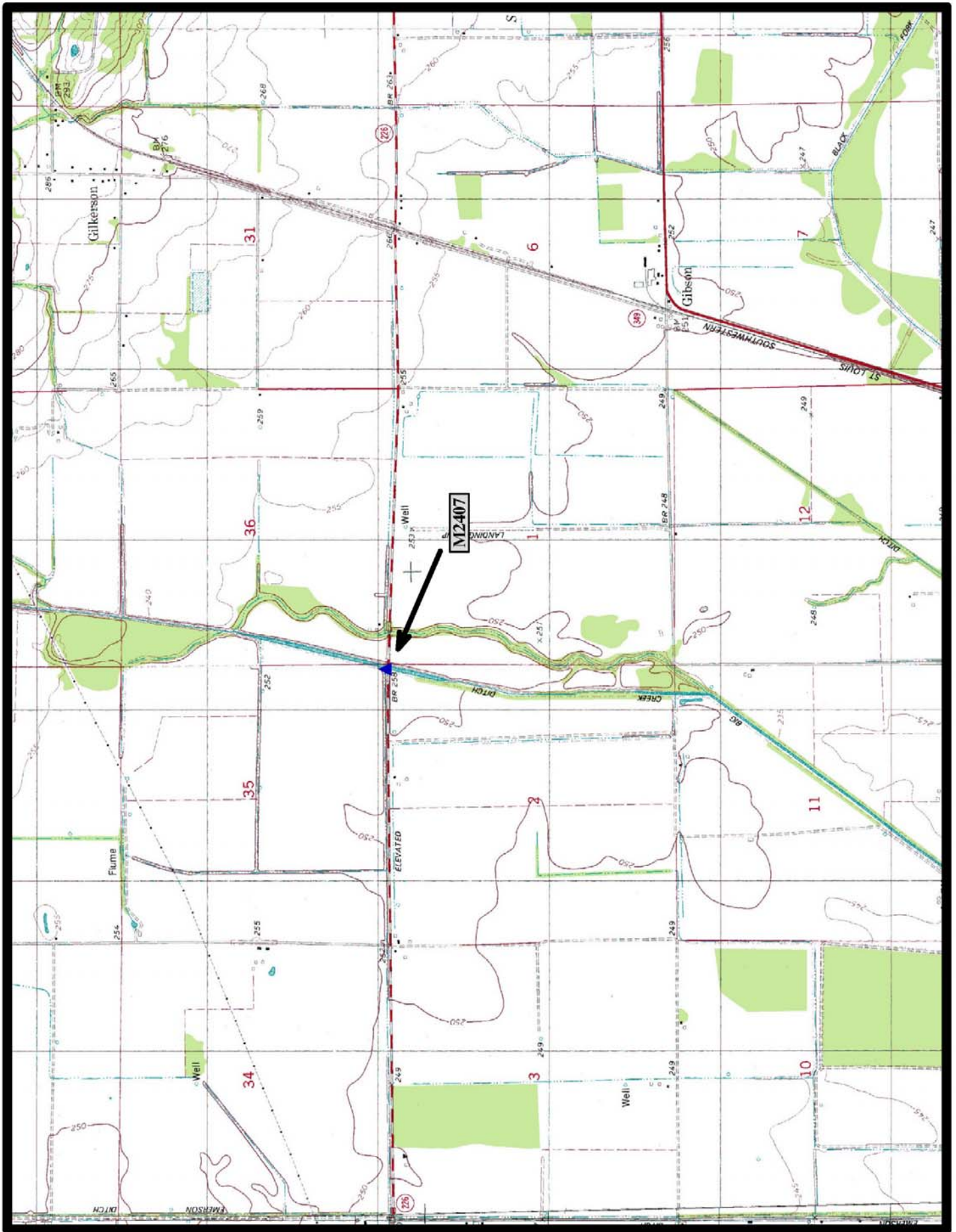


↑
North

Etowah 7.5 min. Quad



HISTORIC BRIDGE #M2407
STATE HIGHWAY 226
CRAIGHEAD COUNTY
PARKER PONY TRUSS
CROSSES—BAYOU DEVIEW
HISTORIC BRIDGE INVENTORY DATE - 2010
DATE OF CONSTRUCTION - 1928
BUILDER - BUNNELL & MACK, PARAGOULD, AR
SHPO NUMBER - CG0086
HAER NUMBER -
DATE LISTED ON NATIONAL REGISTER -
LAT./LONG. 35:47:35.17, -90:50:22.59



North

Herman 7.5 min. Quad